



## DBE News & Events

January 31, 2018

### *Paving, Revamped I-40/I-17 Interchange Highlight*

Pavement improvement along Interstates 17 and 40 and a revamped I-17/I-40 interchange in Flagstaff highlight Arizona Department of Transportation projects planned for northern Arizona in 2018.

This spring, crews will return to lay the final layer of asphalt along a 12-mile stretch of Interstate 40 between Parks and Riordan, completing that project. Repaving on I-40 west of Flagstaff will then pick up in Parks at milepost 179 and head 17 miles west to Cataract Lake in Williams.

Northbound Interstate 17 will also receive a facelift this year as crews replace pavement from milepost 312 to milepost 340 near the I-40 interchange. The work will address winter damage the highway has suffered over the years.

In addition to the repaving work, a separate project will continue completely rebuilding 5 miles of I-40 west of Williams between mileposts 156 and 161 in the westbound direction. Crews rebuilt the eastbound lanes last summer.

I-40 will have 34 miles of new pavement in each direction west of Flagstaff when these projects are complete. This new pavement will provide a longer-term fix to deterioration resulting from the many freeze-thaw cycles the area sees each winter, along with snow, snowplowing and commercial truck traffic.

Another major project coming to the Flagstaff area this year will improve the I-17/I-40 interchange in Flagstaff by replacing three bridge decks and replacing pavement on the ramps, among other work.

In the Verde Valley, crews are continuing to widen 9 miles of State Route 260 west of Interstate 17. The project, scheduled to finish before year's end, is nearly halfway complete with the new eastbound lanes paved up to Courty Drive from I-17. Work is proceeding on seven roundabout intersections between I-17 and Thousand Trails Road.

The \$62M project will improve safety and traffic flow in the growing Verde Valley area.

Among other projects planned for northern Arizona in 2018, crews will return this summer to complete a project widening along US 60 in Show Low between State Route 77 and 40th Street. In addition to laying the final layer of asphalt, the work includes completing sidewalks and landscaping. ●

READY TO PLAY!

GLENDALE ADOT EXPO MARCH 1ST!

**DBE & Small Business Transportation**

MAJOR LEAGUE OPPORTUNITIES IN TRANSPORTATION

**REGISTRATION NOW OPEN!**

**In the News**

January 31, 2018

**Long-term options for 80-mile stretch of US 191 don't include closure**

**Any change would stem from collaboration between ADOT, area stakeholders**

While the Arizona Department of Transportation plans to involve the community in developing long-term plans for maintaining US 191 between Morenci and Alpine, closing this stretch is not – and never has been – among the options under consideration.

“While ADOT isn’t proposing any concrete action, we want to have a transparent and detailed discussion with all stakeholders to determine the best long-term plan for US 191 through this area,” said Bill Harmon, district engineer for ADOT’s Southeast District. “Such a discussion would involve residents, local agencies, elected leaders and other stakeholders. Among other issues, it would take into account the area’s public safety needs.”

The 80-mile stretch of US 191 between Morenci and Alpine is one of the least-traveled in the state highway system, used on average by 81 vehicles per day.

The winding, high-altitude path through national forest that makes this stretch so beautiful for motorists also makes it expensive to maintain: The average annual cost was \$658,000 between 2011 and 2016, in large part due to plowing snow and addressing damage from harsh winter weather.

Long-term options that could be developed over the coming years include partnerships with other agencies to share maintenance costs, exploring federal funding and grant opportunities to offset maintenance, operation and construction costs, or turning the stretch over to local jurisdictions willing to take it into their systems.

“With transportation funding limited and nearly 7,000 miles of state highways to maintain, ADOT has an obligation to collaborate with area stakeholders in developing long-term plans for low-volume routes,” Harmon said. “We understand that US 191 is important to connectivity within and between Greenlee and Apache counties, and that must be the starting point for these discussions.” ●

**I-10 Widening in Casa Grande to Start in 60 Days**

**By Heather Smathers for Casa Grande Dispatch**

State transportation officials say work will begin on Interstate 10 in Casa Grande within the next 60 days, widening the route to Tucson.

A widening project at Earley Road is expected to be approved by the State Transportation Board. Work will begin by mid-March, said Tom Herrmann, an Arizona Department of Transportation spokesman.

Herrmann gave a presentation to the Economic Development Group of Eloy last week.

ADOT has big plans for Pinal County over the next 18 months, Herrmann said.

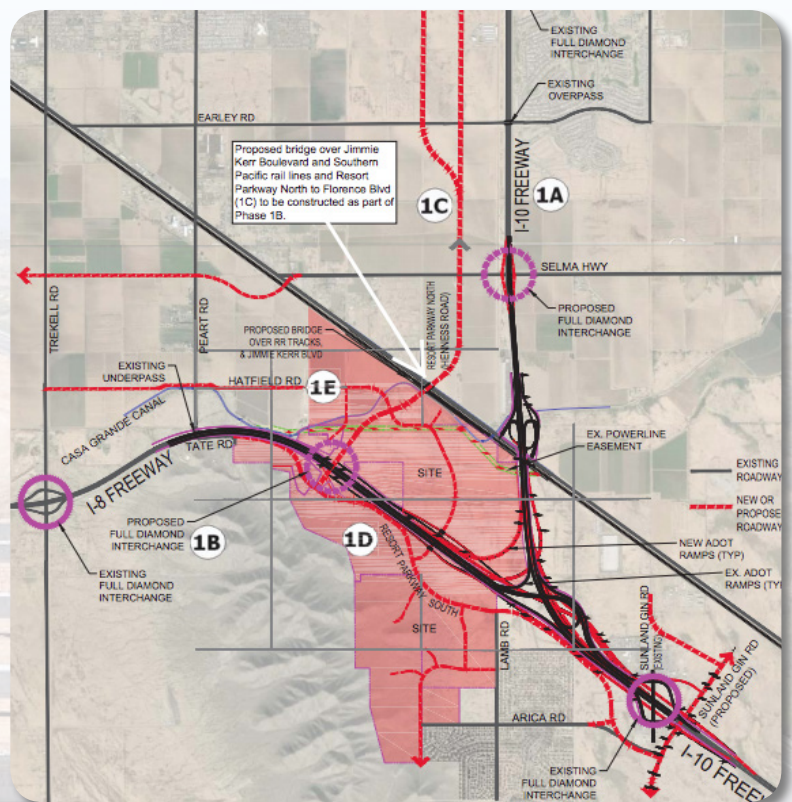
Four projects are or soon will be underway. In addition to the widening at

Earley Road, ADOT officials will also reconstruct a bridge over I-10 near the current alignment at Jimmie Kerr Boulevard.

The entire Earley Road and Jimmie Kerr Boulevard project will take about 480 days to complete, although that work will just be for the first phase of the project.

South on I-10, work already has begun on a widening project at Picacho. Work at the State Route 87 interchange is part of that widening project. When both the Earley and Picacho widening projects are complete, drivers will have a six-lane interstate between Casa Grande and Tucson.

Read more at [Casa Grande Dispatch](#).



Credit: Casa Grande Dispatch

**Business & Industry Events**

January 31, 2018

**February**

- 1

**Contract & Construction Documents**  
 Location: 1661 N. Swan Road, Suite 144, Tucson  
 Time: 7:30am - 4:00pm
- 5

**Understanding the Surety Bond Process**  
 Location: 6225 N 24th St. #200, Phoenix  
 Time: 11:30am - 2:00pm
- 7

**Introduction to Contracts**  
 Location: 3110 N. Central Ave. Phoenix  
 Time: 6:00pm - 7:30pm
- 7

**Emerging Business Seminar Series**  
 Location: 1365 N Scottsdale Rd Suite 135, Scottsdale  
 Time: 7:30am - 9:30am
- 7

**Lunch and LEED: Sustainable Sites**  
 Location: 901 East Madison Street, Phoenix  
 Time: 11:30am - 1:00pm
- 7-8

**Project Management Development Program**  
 Location: 5552 E. Washington, Phoenix  
 Time: 7:30am - 4:30pm
- 8

**The Legal Ins and Outs of Startups**  
 Location: 3110 N. Central Ave. Phoenix  
 Time: 5:30pm - 7:30pm
- 8

**BIM Project Execution Planning, 3rd Edition**  
 Location: 5025 East Washington Street, 1st Floor, Phx  
 Time: 7:30am - 4:00pm
- 13

**Professional Women's Alliance Presents Carrie Young**  
 Location: Phx Country Club, 2901 N. 7th St.  
 Time: 11:00am - 1:00pm
- 14

**Key Strategies in Negotiating Letter of Intent**  
 Location: Webinar  
 Time: 1:00pm - 2:40pm
- 15-16

**NCCER Fundamentals of Crew Leadership**  
 Location: 436 S. Hamilton Ct. Gilbert  
 Time: 8:00am - 5:00pm

**February**

- 20

**For(u)m: Spring Subcontractor Expo**  
 Location: 2200 East Riverview Drive, Phoenix  
 Time: 3:00pm - 5:00pm
- 20

**Evaluating and Estimating Costs and Pricing Part 2**  
 Location: 3110 N. Central Ave. Phoenix  
 Time: 5:30pm - 7:30pm
- 21

**Economic Development Insider Series: Rick Naimark**  
 Location: 2394 E Camelback Road, Ste 600, Phoenix  
 Time: 8:00am - 9:30am
- 21

**ABA Legal Roundtable: Insurance & Indemnity**  
 Location: 3110 N. Central Ave. Phoenix  
 Time: 7:30am - 9:30am
- 22

**Managing Contract Compliance: Prompt Payment**  
 Location: ADOT BECO Office, 1801 W. Jefferson St., Phoenix  
 Time: 11:30am - 1:00pm
- 28

**Northern AZ Economic Development Symposium**  
 Location: 160 N. Valentine St. Wickenburg  
 Time: 9:45am - 1:30pm

**March**

- 1

**DBE & Small Business Transportation EXPO**  
 Location: 5750 W Glenn Dr, Glendale  
 Time: 7:00am - 12:00pm
- 13

**DBE Professional Services Task Force Meeting**  
 Location: ADOT BECO 1801 West Jefferson Street  
 Time: 9:00am - 11:00am **Registration link coming soon!**
- 23

**The 20th Annual Southern AZ Procurement Fair**  
 Location: Kino Sports Complex, Tucson  
 Time: 9:00am - 2:00pm
- 28-29

**AZ Roads and Streets Conference**  
 Location: Westin La Paloma Resort & Spa, Tucson  
 Time: 9:00am - 2:00pm
- 29

**Lunch & Learn: Access to Capital**  
 Location: ADOT BECO 1801 West Jefferson Street  
 Time: 11:30am - 1:00pm



**Project Opportunities**

January 31, 2018

**Links**

- [ADOT Current Advertisements](#)
- [ADOT Engineering Advertisements](#)
- [ADOT Public-Private Partnership Initiatives](#)
- [ADOT Advertised Alternative Delivery Projects](#)
- [Bidding Opportunities Around the State](#)

**Did you know?**

The ADOT Standard Specifications for Road and Bridge Construction are available for download and reference [here](#). Contractors are encouraged to review the standard specifications, especially as it relates to their respective scopes of work, to understand expectations, limits, tolerances, and basis of payment for bid items.

**!** ADOT Bid openings after January 1st, 2017 will require prime contractors to submit DBE affidavits within 5 calendar days from bid opening. This is two days less than the current requirement. For example, if bid opens on Friday, the DBE Affidavits will be due to BECO, from the prime contractor, by Wednesday before 4:00 PM. Therefore, this is reducing the time DBEs and prime contractors have to prepare, sign and submit the DBE Affidavits to BECO. DBEs are urged to consider this new time restriction when working with prime contractors to complete and sign the DBE Affidavits in order for them to be submitted to BECO by the 5th calendar day from bid opening.

**Featured Federal-Aid Projects**

General/Sub Contractors Opportunities						
Due Date	Project Valuation	DBE Goal	Solicitation/ Project Number	Type	Project Owner and Description	Contact
2/2/18 11am	\$4.5M	7.53%	CMAQ-303-A(222)T; H881301C	<a href="#">IFB</a>	ADOT - <b>Construct SR 303L, Phase 1 ITS, SR 303L from I-10 to Northern Ave, Goodyear.</b> The work consists of the installation of closed circuit television cameras, dynamic message signs & fiber optic network infrastructure.	Thomas Mowery-Racz, Engineering Specialist, at <a href="mailto:tmowery-racz@azdot.gov">tmowery-racz@azdot.gov</a> or Girgis Girgis, Construction Supervisor, at <a href="mailto:ggirgis@azdot.gov">ggirgis@azdot.gov</a> .
2/2/18 11am	\$31.5M	7.89%	NHPP-017-B(232)T; H893401C	<a href="#">IFB</a>	ADOT - <b>Pavement &amp; Bridge Rehabilitation, I-17, Coconino County.</b> The work consists of milling & repaving of asphalt concrete pavement, removing & replacing bridge decks, bridge deck widening, slope paving repair, guardrail replacement, installing new dadoes & thrie beam transitions, pavement marking & signing.	Sarker Rahman, Engineering Specialist, at <a href="mailto:srahman@azdot.gov">srahman@azdot.gov</a> or Steve Monroe, Construction Supervisor, at <a href="mailto:smonroe@azdot.gov">smonroe@azdot.gov</a> .
2/9/18 11am	\$9.5M	7.19%	NHPP-092-A(207)T; H871701C; NHPP- HSIP-092-A(204)T; H826501C	<a href="#">IFB</a>	ADOT - <b>Pavement Rehabilitation &amp; Intersection Improvement, Bisbee Hwy, Sierra Vista.</b> The work consists of milling and replacing the existing concrete, applying a double chip seal coat, constructing sidewalk, curb & gutter, intersection widening, traffic signal improvement, drainage improvement & placing pavement markings.	Manish Shah, Engineering Specialist, at <a href="mailto:mshah@azdot.gov">mshah@azdot.gov</a> or Bill Sloan, Construction Supervisor, at <a href="mailto:wsloan.consultant@azdot.gov">wsloan.consultant@azdot.gov</a> .
2/9/18 11am	\$1.9M	8.45%	HSIP-FLA-0(209)T; SH51101C	<a href="#">IFB</a>	ADOT - <b>Construct Roundabout, Flagstaff.</b> The work consists of constructing a new single lane roundabout, constructing retaining walls, raised medians and reconstruction of the existing Flagstaff Urban Trail System (FUTS)	Jalal Kamal, Engineering Specialist, at <a href="mailto:jkamal@azdot.gov">jkamal@azdot.gov</a> or Steve Monroe, Construction Supervisor, at <a href="mailto:smonroe@azdot.gov">smonroe@azdot.gov</a> .



## Connecting with Connect 202

As construction gets under-way on the South Mountain Freeway Project, Connect 202 Partners, LLC (C202P) continues its commitment to reaching the project's Disadvantaged Business Enterprise (DBE) goals. C202P has developed a DBE Spotlight Recognition Program and each quarter a DBE firm will be recognized for their outstanding contribution to the project.

**C202P's 1st Quarter 2018 DBE Spotlight is awarded to Hoque & Associates, Inc.** Hoque & Associates is providing Quality Control services related to the embankment compaction testing and drilled shaft CSL testing on the Project. Hoque & Associates is integral to the embankment operations schedule, by completing compaction tests concurrently with placement to allow efficient scraper haul/placement in roadway fills. Their ability to provide timely testing and accurate reporting for CSL testing results is essential to maintaining the schedule for bridge substructure activities. Their willingness to work through report submittal questions and provide additional documentation to close out test report submittals, has been instrumental to the completion of the Project. Hoque & Associates recently started supporting the design coordination quality process and have been a real asset in updating project design documentation and closing design processes. Congratulations!



<http://hoqueandassociates.com/>

Pictured Left to Right: Walter Fedrowitz (C202P, Deputy Project Director), Melissa Abraham (C202P, DBE/OJT Compliance Manager), Ron Dukeshier (C202P, Construction Manager), Mahmuda Hoque (Hoque & Associates), Travis Legare (C202P, Salt River Segment Manager), Cody McElprang (Hoque & Associates), Walter Lewis (C202P, Project Director), Enamul Hoque (Hoque & Associates)

### Upcoming Procurement Opportunities:

- Permanent Fence
- Base Paving Cross Streets
- Pipe Welder

Follow us for up-to-date information on the project.



@SouthMountainFreeway



@Loop202SouthMountainFreeway

### PROJECT DESCRIPTION

#### Project Owner:

Arizona Department of Transportation

#### Project Name:

SR 202L (South Mountain Freeway)

I-10 (Maricopa Freeway) –  
I-10 (Papago Freeway)

Public Private Partnership (P3)

Design-Build-Maintain Contract

#### Project Number:

202 MA 054 H882701 C

#### Project Substantial Completion

##### Date:

November 2019

#### DBE Goals:

16.45% Professional Services, 10.93%  
Construction, 6.08% Capital Asset  
Replacement Work

# LUNCH & LEARN



**Location: 1801 W. Jefferson Street, Suite 101, Phoenix, AZ 85007**

ADOT BECO is the place for DBEs and SBCs to gain important business and technical assistance to help you compete effectively for work on federal-aid contracts and other opportunities. These easy to attend luncheon meetings give you a quick way to improve your knowledge and skills to help your business succeed.

Attend in person or by webinar

Visit ADOT BECO's New Business Resource Center – created for you!

**WEDNESDAY February 22, 2018**

**11:30 am - 1:00 pm**

## **Managing Contract Compliance: Prompt Payment and DBE Audit Requirements**

*Presented by: Cedric Johnson, JD Contract Compliance Manager  
ADOT Engineering Consultants Section*

- An Overview of the Payment Process
- Prompt Pay
- Requirements for approval of new sub-consultants added to a contract
- Audits within the DBE system – An overview of the process

**BRING YOUR LUNCH AND JOIN YOUR FELLOW ENTREPRENEURS  
TO IMPROVE THE BOTTOM LINE OF YOUR BUSINESS.**

Click here to register:

<http://lunch-and-learn-managing-contract-compliance.eventbrite.com>

# LUNCH & LEARN



**Location: 1801 W. Jefferson Street, Suite 101, Phoenix, AZ 85007**

ADOT BECO is the place for DBEs and SBCs to gain important business and technical assistance to help you compete effectively for work on federal-aid contracts and other opportunities. These easy to attend luncheon meetings give you a quick way to improve your knowledge and skills to help your business succeed. Attend in-person or via webinar.

Visit ADOT BECO's New Business Resource Center – created for you!

**THURSDAY March 29, 2018**

**11:30 am - 1:00 pm**

**Access to Capital**

*Panelists: Teresa Miranda – Prestamos CDFI - LLC , Ralph Gonzales – Capital Active Funding, Craig Norton- Small Business Administration (SBA)*

*Questions to be answered:*

- What is your organization's success with small business access to capital?
- What are the types of loans and the process for getting a loan, line of credit or credit card?
- What is the dollar range most requested by and approved for small businesses?
- What are the general qualifications and paperwork needed?
- What are the most common reasons for decline?

**BRING A LUNCH AND JOIN YOUR FELLOW ENTREPRENEURS  
TO IMPROVE THE BOTTOM LINE OF YOUR BUSINESS.**

**Click here to register:**

<https://www.eventbrite.com/e/lunch-and-learn-access-to-capital-tickets-42724723799>



## **“GET READY” For Tax Filing Season Resources**

(Please click each heading for more information)



### **Take Steps Now for Tax Filing Season**

Get ready today to file your 2017 federal income tax return. Changes for the tax filing season include ITINs, delays in refunds and validating your electronically filed return.

### **You May Need to Renew Your ITIN (Individual Taxpayer Identification Number)**

Your ITIN may expire before you file a tax return in 2018. All ITINs not used on a federal tax return at least once in the last three years will expire on December 31, 2017. Additionally, all ITINs issued before 2013 with middle digits of 70, 71, 72 or 80 (Example: (9XX-70-XXXX)) will expire at the end of the year.

### **Delays in Refunds for EITC and ACTC**

If you claim the earned income tax credit (EITC) or the additional child tax credit (ACTC) on your tax return, the IRS must hold your refund until at least February 15 — even the portion not associated with EITC or ACTC.

### **Validating Your Electronically Filed Tax Return**

When self-preparing your taxes and filing electronically, you must sign and validate your electronic tax return by entering your prior-year Adjusted Gross Income (AGI) or your prior-year Self-Select PIN. Using an electronic filing PIN is no longer an option.

### **Let Us Help You - Online Tools and Resources**

Before you call, check out the topics people ask about most. We have high call volumes and encourage you to click on one of these hot topics for faster service.

**SL Contact: Lisa Novack**  
**Phone: 602-636-9476**

**Email: [Lisa.A.Novack@irs.gov](mailto:Lisa.A.Novack@irs.gov)**